

# MONTHLY MEMBERSHIP PROGRESS REPORT

LOCATION CALIFORNIA

District 4 C1

Results as of: 10/31/2021

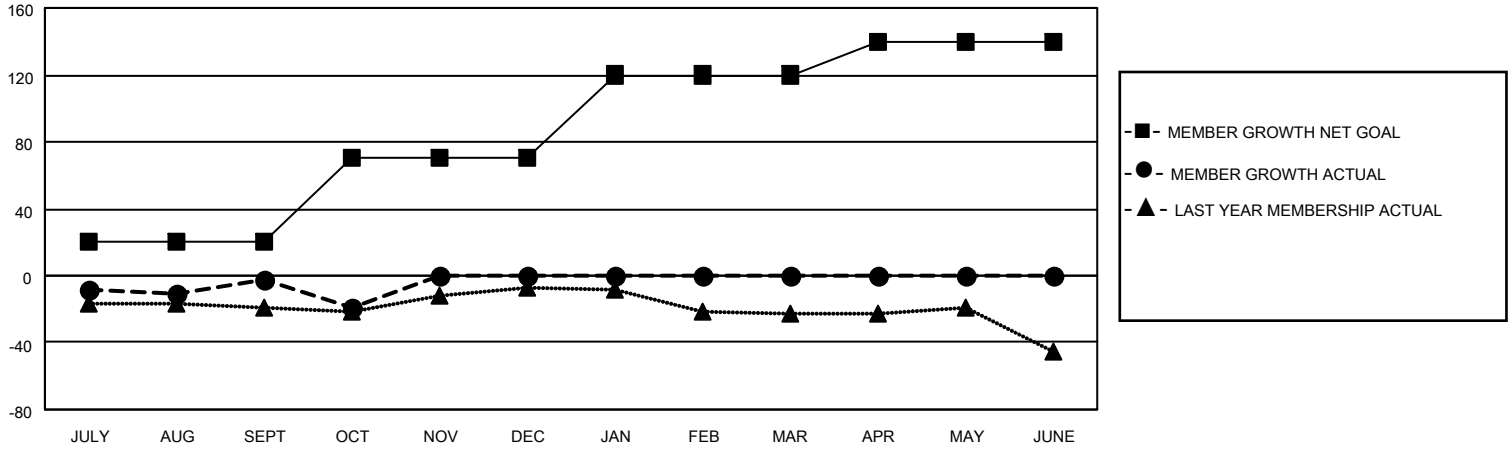
Clubs			
RESULTS FOR 2021-2022			
QUARTER	NEW CLUB GOAL	NEW CLUBS	DROPPED CLUBS
JULY/AUG/SEPT	1	0	2
OCT/NOV/DEC	1	0	1
JAN/FEB/MAR	1	0	0
APR/MAY/JUNE	1	0	0

Members			
RESULTS FOR 2021-2022			
QUARTER	MEMBER GROWTH NET GOAL	MEMBER GROWTH ACTUAL	DROPPED MEMBERS ACTUAL (including transfers)
JULY/AUG/SEPT	20	56	51
OCT/NOV/DEC	50	3	20
JAN/FEB/MAR	50	0	0
APR/MAY/JUNE	20	0	0

**GOALS AND ACTUAL NEW CLUBS CUMULATIVE**



**GOALS AND ACTUAL MEMBERS CUMULATIVE**



**DROPPED CLUBS: 3**

16 CLUBS OF 42 ADDED 1 OR MORE NEW MEMBERS

GENDER DISTRIBUTION

MALE	609 (64.93%)
FEMALE	329 (35.07%)
NON BINARY	0 (0.00%)
PREFER NOT TO ANSWER	0 (0.00%)

DROPPED MEMBERS

DECEASED	4
CLUB CANCELLED	9
OTHER	58
<b>TOTAL</b>	<b>71</b>

[CLICK HERE FOR CUMULATIVE MEMBERSHIP DATA](#)

TOTAL FAMILY UNIT MEMBERS	193
FAMILY MEMBERS PAYING HALF DUES	98